

# MainLine Solar: Corporate Profile

## Company Origins

Founded in 2009 by three Bucknell University graduates, MainLine Solar began its operations in West Chester, PA serving the Greater Philadelphia area. The company established itself as a solar integrator and installer with the timely release of the Pennsylvania Sunshine Program, which reduced the cost for small business and residential photovoltaic (PV) system installations in Pennsylvania during the early stages of the solar industry. With the growth of robust incentive markets across the Northeast, MainLine Solar shifted its focus from residential to large commercial, industrial, and utility scale installations. In 2010, MainLine Solar was awarded the contract for the 4<sup>th</sup> largest PV solar system in Pennsylvania and received the coveted PA Economic Development Authority's (PEDA) grant in the amount of \$450,000.



## Present Day

Today, MainLine Solar handles every aspect of a PV solar installation including comprehensive system design, 3D concept drawings, financial modeling, permitting, complete turnkey installation, utility grid interconnection as well as Solar Renewable Energy Credit (SREC) certification and portfolio management. MainLine Solar is an agile and aggressive firm that focuses on regions with maturing, lucrative SREC markets. By carefully tracking local and regional SREC market trends, clients in states with the most potential for revenue generation with PV systems are identified and targeted. For this reason, MainLine Solar opened a second office in West Bridgewater, MA in July 2011 with the launch of Massachusetts' progressive Renewable Portfolio Standard (RPS) Solar Carve-out. Additionally, with the deregulation of many Northeast utilities, MainLine Solar earned its place among the industry's elite solar integrators capable of capitalizing and structuring Power Purchase Agreement projects for its clients, the zero-cost solution for energy savings made simple by purchasing discounted solar energy from a PV system installed on-site or within the same load zone.

## Sustainable Mission

During the industrial revolution, society invented energy consuming machines and motors before it learned how to responsibly meet the rapidly growing demand for energy. MainLine Solar's mission is to make renewable energy more accessible, affordable and abundant for society. This goal can be realized by taking the right steps toward a self generating, energy independent, sustainable future for our nation. MainLine Solar is taking these steps by furthering the development of PV solar applications across the Northeast United States. We are proponents of a more energy-efficient way of life that involves utilizing the many renewable resources available all around us, such as solar power. MainLine Solar's dedication to reducing dependence on coal and oil energy sources while furthering the development of clean technology is at the core of our company ethos.

## Experience

**Total kilowatts installed: 1,250**

MainLine Solar has completed numerous installations in Pennsylvania and New Jersey. The company has run the gamut of the solar industry from residential and ground-mounted installations, to mid- and large-scale commercial applications. In August 2011, MainLine Solar completed the first east-west, Thin Film installation in New Jersey, which is also the largest of its kind in the country. Identifying the demand for utility scale, ground-mounted solar applications in budding SREC markets, MainLine Solar has also been engaged in feasibility and pre-development work for 8 megawatts (MW) of Distributed Generation projects across Southeastern Massachusetts set for commissioning in 2012. Found below are some of the highlights of MainLine Solar's recent accomplishments:

<b>Client:</b>	Troy Realty, LLC
<b>Array Size:</b>	50.4 kW
<b>Module Type:</b>	Schüco AL 01 90W Thin Film
<b>Completion Date:</b>	August 2011



**Client:** A. Duie Pyle  
**Array Size:** 1.0 MW  
**Module Type:** Schüco PS 09 240W Polycrystalline  
**Completion Date:** February 2011



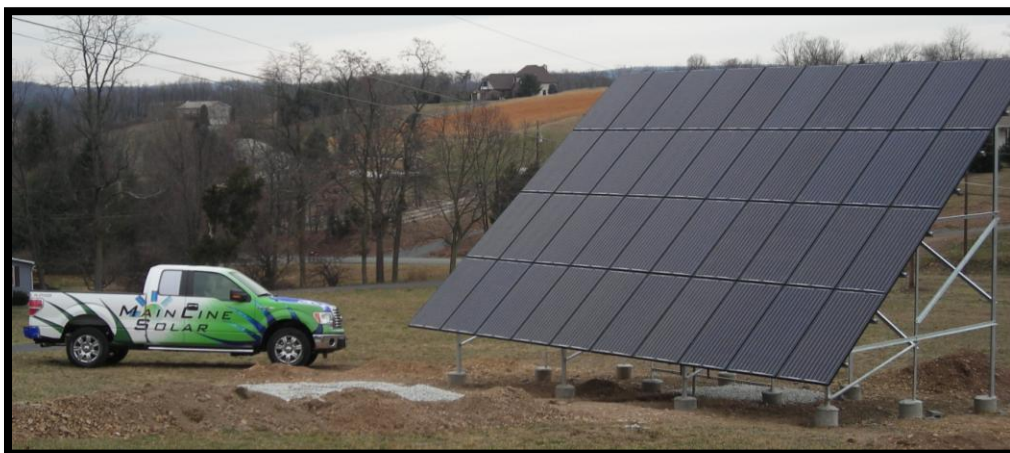
**Client:** Stancato & Abdala Greentree Associates, LLC  
**Array Size:** 20.6 kW  
**Module Type:** Schüco SPV 210 SMAU-1 Monocrystalline  
**Completion Date:** January 2010



**Client:** Residential  
**Array Size:** 9.5 kW  
**Module Type:** Schüco 210W SMAU-1 Polycrystalline  
**Completion Date:** December 2010



**Client:** Residential  
**Array Size:** 7.2 kW  
**Module Type:** Schüco MS 05 180W Polycrystalline  
**Completion Date:** November 2010



---

## Client References

### **Barbara Melgaard**

Troy Realty, LLC  
(973) 263-1885  
Project: 50.4 kW Thin Film

### **Tim Koch**

A. Duie Pyle  
(610) 587-4712  
Project: 1.0 MW Polycrystalline

### **Tony Stancato**

Stancato & Abdala Greentree Associates, LLC  
(610) 637-5654  
Project: 20.6 kW Monocrystalline